

# Interspeed®340

## Controlled depletion polymer antifouling

### Product Description

Interspeed®340 is a controlled depletion polymer (CDP) self polishing antifouling.

It is suitable for use at Newbuilding or Maintenance & Repair and can be applied directly over existing antifouling in good condition.

### Features

Surface tolerant

Up to 36 months in service periods

Low VOC content 363g/lit (EPA Method 24),  
201g/kg (EU Solvent Emissions Directive)

Good mechanical properties

Controlled polishing rate and biocide release

### Benefits

Freedom to apply over existing antifouling in good condition

Flexibility in drydocking schedule

Control of solvent emissions

More durable films

Tailored specification design with optimum dry film thickness

### Product Information

**Colour** BQA341 Brown, BQA342 Blue, BQA344 Plum, BQA347 Red, BQA349 Black

**Surface preparation** Interspeed®340 should always be applied over a recommended primer coating scheme

**Volume solids** 60% ±2% (ISO 3233:1998)

**Typical film thickness** 125 microns dry (208 microns wet)

**Hard dry** 12 hours @ 25°C

**Minimum application temperature** 5°C

**Method of application** Airless Spray, Brush, Roller

### In Service Performance



Container ship after 24 months in service



Tanker after 30 months in service



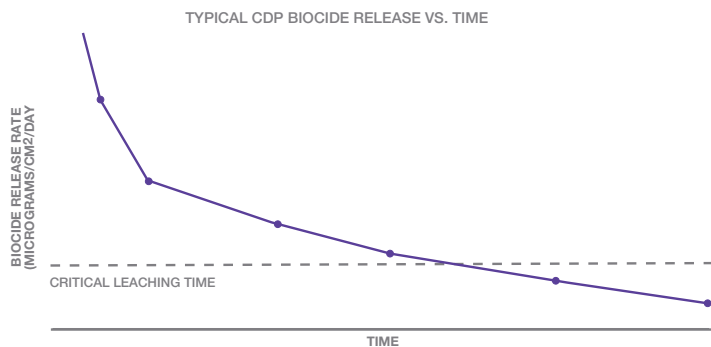
Bulker after 36 months in service

For each of our products the relevant Product Data Sheet, Material Safety Data Sheet and package labelling comprise an integral information system about the product in question. Copies of our Product Data Sheets and Material Safety Data Sheets are available on request or from our website.

# Interspeed®340

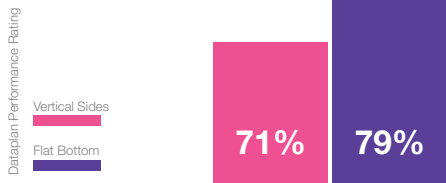
## Binder Technology

Rosin comes from trees and has been used for over 100 years in antifouling paints as it is slightly soluble in seawater. Modern "Soluble Matrix" antifouling are commonly referred to as Controlled Depletion Polymer (CDP) antifouling. The soluble nature of the rosin together with the biocide package ensures an adequate supply of biocide release rate to keep the performance above the critical release rate.



## Antifouling Performance

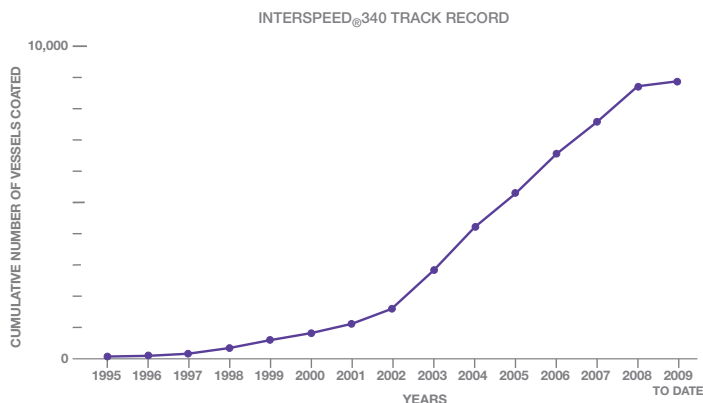
### Interspeed®340



The International 'Dataplan' performance monitoring system records the application and performance of coating systems on over 30,000 vessels currently in service. At each drydocking, vessel details, including drydocking interval and coating performance, are recorded. Antifouling coatings are assessed for the presence of fouling (type, severity and extent) and from this unique database, an antifouling performance rating can be calculated.

## Track Record

Interspeed®340 has a track record of >10 years with applications on >8000 vessels.

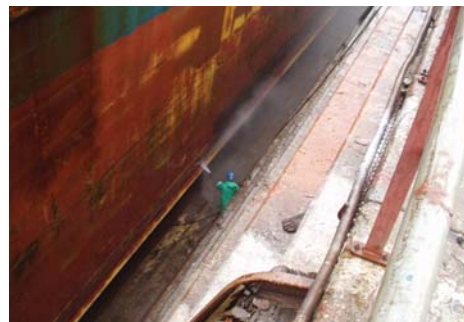


Unless otherwise agreed in writing, all products supplied and technical advice or recommendations given are subject to the Conditions of Sale of our supplying company.

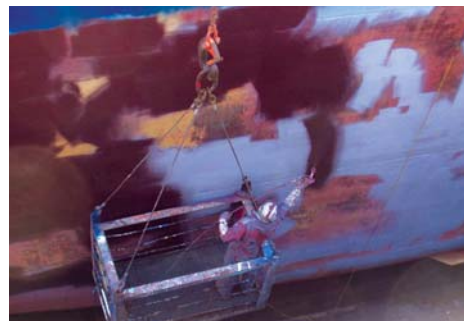
To find out more visit: [www.international-marine.com](http://www.international-marine.com)

International and all products mentioned in this publication are trademarks of or are licensed to AkzoNobel © AkzoNobel, 2010  
International Paint Ltd, Stonegate Lane, Felling, Gateshead NE10 0JY. Tel: +44 (0)191 469 6111 Fax: +44 (0)191 495 2003

## Key Advantages During Application



Surface tolerant and compatible with other CDP systems



Control of solvent emissions



Good hold-up and DFT control



Good finished appearance

