

Advanced Duplex System

High volume solids self polishing antifouling system

Advanced Duplex System

High volume solids self polishing antifouling system

Track Record

Track Record for Intersmooth[®] SPC and Interswift[®] 655

Both Intersmooth[®] SPC and Interswift[®] 655 have an excellent track record with applications on over 10,000 vessels. Diagrams 3 and 4 show the track record for Intersmooth[®] SPC over the last 10 years and for Interswift[®] 655 over the last 6 years.

Diagram 3

Intersmooth[®] SPC applications on >5200 vessels

10 yrs

Intersmooth[®] Track Record

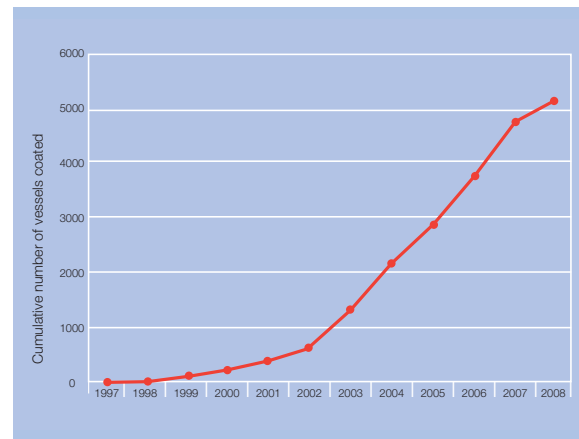
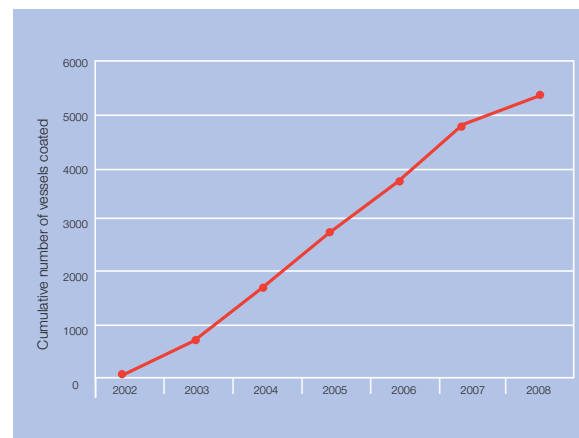


Diagram 4

Interswift[®] 655 applications on >5200 vessels

6 yrs

Interswift[®] 655 Track Record



Product Description

The Advanced Duplex System is a high volume solids, TBT-free, self polishing antifouling system incorporating unique copper acrylate SPC technology.

The Advanced Duplex System has been specially designed for vessels that require a cost effective 60 month antifouling scheme combining the high performance of Intersmooth[®] SPC and Interswift[®] systems. The Advanced Duplex System does not use any antifoulings based purely on rosin or CDPs. The first three years of the scheme provides a first-rate performance by using a pure SPC, followed by two years of good performance using a self polishing antifouling.

Intersmooth[®] 7465HS SPC is specifically designed for newbuildings and Intersmooth[®] 7460HS SPC for maintenance and repair. They offer the highest volume solids available in a SPC antifouling coating. Both have a volume solids content of 54% compared to 40% for Intersmooth[®] 460 SPC and Intersmooth[®] 465 SPC.

Interswift[®] 655 is designed for both newbuildings and maintenance and repair and has a volume solids content of 58%.

Higher solids means lower volatile organic compound (VOC) content, making them far more attractive to shipyard facilities seeking to meet tougher VOC emission regulations. Higher solids content also results in fewer coats of antifouling being necessary. For example, on a 60 month scheme** it is only necessary to apply two coats rather than three, saving time in dock as well as cost savings associated with less paint being used and applied.

Features

Benefits

SPC antifouling using patented copper acrylate technology	Predictable polishing to allow 60 month schemes Self smoothing
High volume solids - Intersmooth [®] SPC 54% - Interswift [®] 655 58%	Faster application Reduced wastage Reduced pail disposal cost
Low VOC content: - Intersmooth [®] SPC 425g/lt*, 226g/kg^ - Interswift [®] 655 390g/lt*, 257g/kg^	Lower solvent emissions
Reduced number of coats for some schemes**	Reduced application costs Increased yard throughput
Good application properties	Enhanced finished appearance Improved hold-up
Low levels of overspray#	Reduced wastage Lower contamination levels Reduced applicator exposure



Unless otherwise agreed in writing, all products supplied and technical advice or recommendations given are subject to the Conditions of Sale of our supplying company.

To find out more visit: www.international-marine.com

International and all products mentioned in this publication are trademarks of or are licensed to AkzoNobel © AkzoNobel, 2008
International Paint Ltd, Stoneygate Lane, Felling, Gateshead NE10 0JY. Tel: +44 (0)191 469 6111 Fax: +44 (0)191 495 2003



November 2008

International
Marine Coatings



* EPA Method 24
^ EU Solvent Emissions Directive
** Depending on vessel activity
Intersmooth[®] 7465HS SPC and Intersmooth[®] 7460HS SPC

Performance Expectations

The Advanced Duplex System offers excellent antifouling performance over the first 36 months of the drydock cycle, and good performance thereafter.

Owners may have different expectations for the last 24 months of the cycle when often the vessel may dock earlier for non-coating related reasons such as engine / shaft repairs or steel replacement.

The Advanced Duplex System is specified to last for 60 months with Intersmooth[®]7460HS SPC topcoat which lasts for a minimum of 36 months and Interswift[®]655 base coat which lasts for the remaining 24 months (see Diagram 1).

International Paint's leading database, 'Dataplan', with records on more than 198,000 drydockings and newbuildings, demonstrates that in practice, only some container ships and large tankers go the full 60 months docking cycle. Most other vessel types dock much earlier.

Performance Comparison

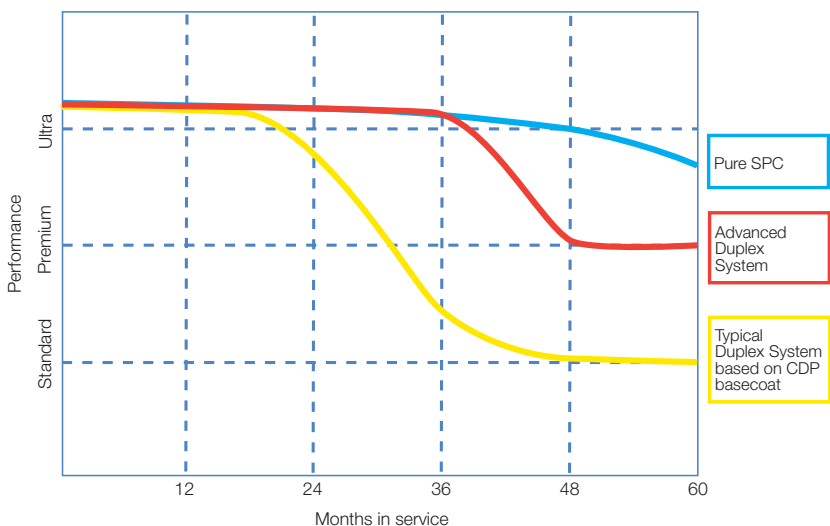


Diagram 1

Overall Advanced Duplex System performance will be a combination of Intersmooth[®]7460HS SPC⁺ and Interswift[®]655

⁺Intersmooth[®]7465HS SPC for newbuildings

Vessel Profile

The Advanced Duplex System from International Paint incorporates a pure high solids SPC over a self-polishing antifouling coating.

The vessel profile illustrates the products applied to different parts of the vessel as part of the Advanced Duplex System (see Diagram 2).

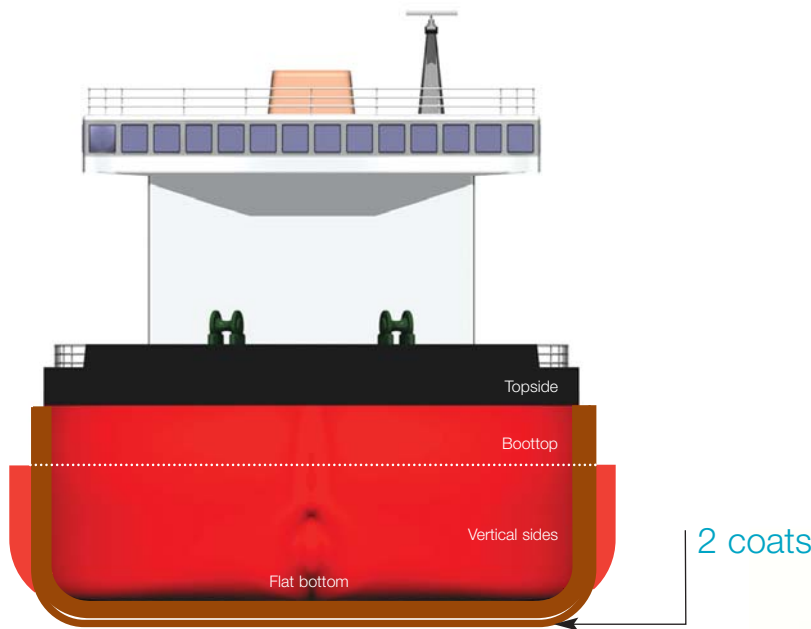


Diagram 2

- Intersmooth[®]7460HS SPC⁺
- Interswift[®]655

⁺Intersmooth[®]7465HS SPC for newbuildings

Product Information

	Intersmooth [®] SPC	Interswift [®] 655
Colour	Newbuilding Maintenance & Repair BEA774 Brown, BEA777 Red BEA754 Brown, BEA757 Red	BMA004 Dark Red, BMA008 Brown BMA004 Dark Red, BMA008 Brown
Surface preparation	Intersmooth [®] SPC should be applied over Interswift [®] 655	Interswift [®] 655 should be applied over a recommended primer coating scheme
Volume solids	54% ±2% (ISO 3233:1998)	58% ±2% (ISO 3233:1998)
Typical film thickness	125 microns dry (231 microns wet)	125 microns dry (216 microns wet)
Time to immersion	24 hours @ 25°C	N/A
Minimum application temperature	-5°C	5°C
Method of application	Airless Spray, Brush, Roller	Airless Spray, Brush, Roller

For each of our products the relevant Product Data Sheet, Material Safety Data Sheet and package labelling comprise an integral information system about the product in question. Copies of our Product Data Sheets and Material Safety Data Sheets are available on request or from our website.

